



EXECUTIVE® ELECTROL®

Automatic Electric Projection Screen Model

SPECIFICATION DATA

DA-LITE SCREEN COMPANY, INC.
 3100 North Detroit Street
 Post Office Box 137
 Warsaw, Indiana 46581-0137
 Phone: 574-267-8101
 800-622-3737
 Fax: 574-267-7804
 www.da-lite.com
 e-mail: info@da-lite.com

SUGGESTED SPECIFICATIONS: _____ projection screens, _____ (H) x _____ (W), electrically operated 120 volt AC (60 Hz) 2.6 amp. Three wire quick reversal motor especially designed for the purpose, to be ball bearing and oiled for life. With automatic thermal overload cut-out and integral interlocking gears. To have pre-set but accessible limit switches to automatically stop screen surface in the "up" and "down" positions. Stop action to be positive to prevent coasting. The roller to be of rigid metal at least 3" in diameter (to be used on screens 12' and under in width) or 5-3/4" in diameter (on screens over 12' in width). Roller to be mounted on two heavy duty brackets equipped with self-aligning bearings. Screen surface to be flame retardant and mildew resistant, Matte White, Glass Beaded or High Power with black masking borders standard. Case to be of wood, with double top for extra rigidity and sound deadening. Motor compartment to be metal lined. A section of the bottom of the case shall be equipped with hinges and connected to the drive mechanism so that it opens and closes automatically with the lowering and raising of the screen surface. Balance of the bottom panel shall be pegged to manual opening to provide access. Hinges shall be mounted to allow matching of the bottom panel to the ceiling. **Specify Type 1 and 2 or Type 3 hinge, as required.** Case to be furnished with a black primer coat, ready to accept final finish by others. To be complete with 3 position control switch with cover plate. Recessed installation requires access to motor. Screen shall be listed by Underwriters' Laboratories and CSA.



Matte White: Seamless in all standard sizes.

Glass Beaded: Horizontal seam required when both dimensions exceed 8'.

High Power: Available in sizes up to 9' x 12'. Horizontal seam required when both dimensions exceed 6'.

DIMENSIONS

Sizes		*Overall Length of Case		Approx. Shipping Weight	
H x W	Cm	In.	Cm	Lbs.	Kg
50" x 50"	127 x 127	76-1/2"	194	144	65.3
60" x 60"	152 x 152	86-1/2"	220	154	69.9
70" x 70"	178 x 178	96-1/2"	245	164	74.4
84" x 84"	213 x 213	110-1/2"	281	184	83.5
6' x 8'	183 x 244	122-1/2"	311	209	94.8
8' x 8'	244 x 244	122-1/2"	311	211	95.7
7' x 9'	213 x 274	134-1/2"	342	234	106.1
9' x 9'	274 x 274	134-1/2"	342	237	107.5
8' x 10'	244 x 305	146-1/2"	372	260	117.9
10' x 10'	305 x 305	146-1/2"	372	263	119.3
9' x 12'	274 x 366	170-1/2"	433	311	141.1
12' x 12'	366 x 366	170-1/2"	433	316	143.3
10'6" x 14'	320 x 427	194-1/2"	494	403	182.8
14' x 14'	427 x 427	194-1/2"	494	410	186.0
12' x 16'	366 x 488	218-1/2"	555	459	208.7
16' x 16'	488 x 488	218-1/2"	555	469	212.7

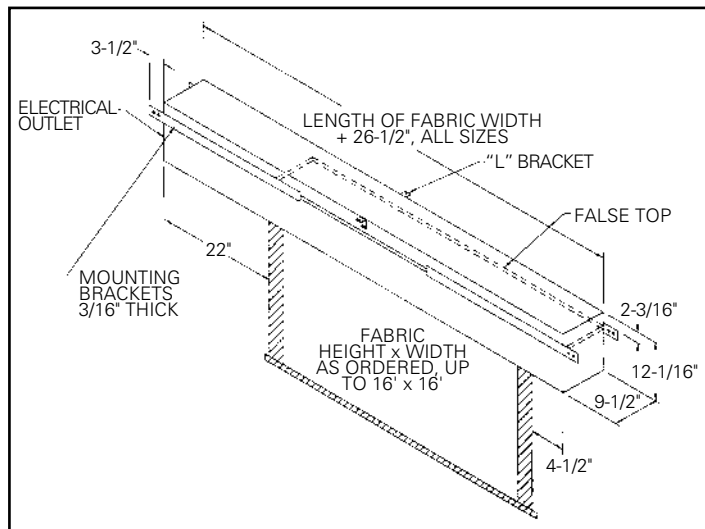
*Add 7" to overall case length for mounting brackets.

Overall case length dimensions ± 1/4".

Specifications subject to change without notice.

Detail dimensional drawings, wiring diagrams and installation instructions available upon request.

Video, HDTV, Letterbox formats and custom sizes available upon request.



WHEN ORDERING, MARK APPROPRIATE SELECTIONS:

Select method of installation:

- Type 1 and 2 - Offset or Flush Mounting
- Type 3 - Extended Mounting

Select viewing surface:

- Matte White
- Glass Beaded
- High Power

Options:

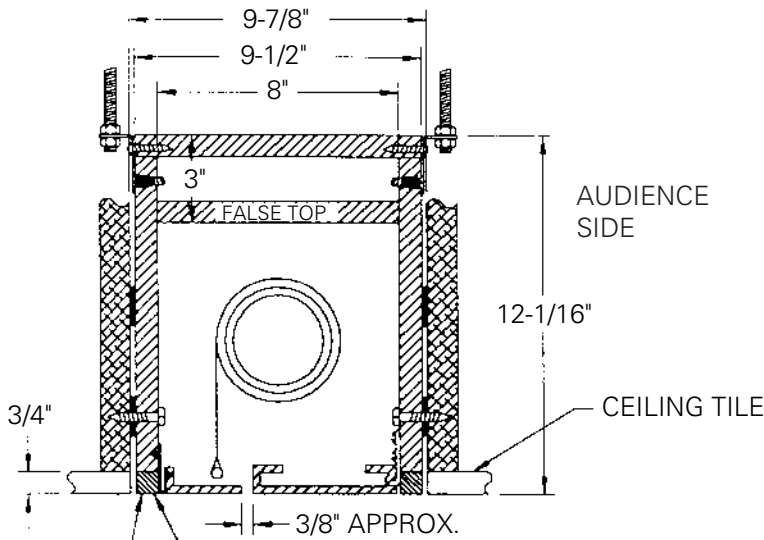
- Black "Extra Drop" to lower picture area more than normal. Maximum total drop 20' including picture area.
- White "Extra Drop" to lower picture area more than normal. Maximum total drop 20' including picture area.
- Single motor low voltage control (LVC)
- Wireless Remote Control for LVC.
 - Radio Frequency Remote
 - Infrared Remote
- Locking Switch Cover Plate for 120V or LVC Switch.
- Key Operated Switch for 120V only (NOTE: cannot be used with LVC).
- No Borders (Black masking borders standard).
- 220 Volt (50 Hz) Motor.
- Video Projector Interface Control - 12V or 5V.
- External SCB-100 - RS-232 Serial Control Board
 - NET-100 Ethernet-Serial Adapter

Project: _____
 Architect: _____
 Phone: _____
 Contractor: _____
 Phone: _____
 Supervisor: _____
 Phone: _____
 Supplier: _____
 Date: _____
 Revised: _____

EXECUTIVE® ELECTROL®

SUGGESTED METHODS OF INSTALLATION

INCLUDING MOUNTING BRACKETS



TYPE 1 AND 2

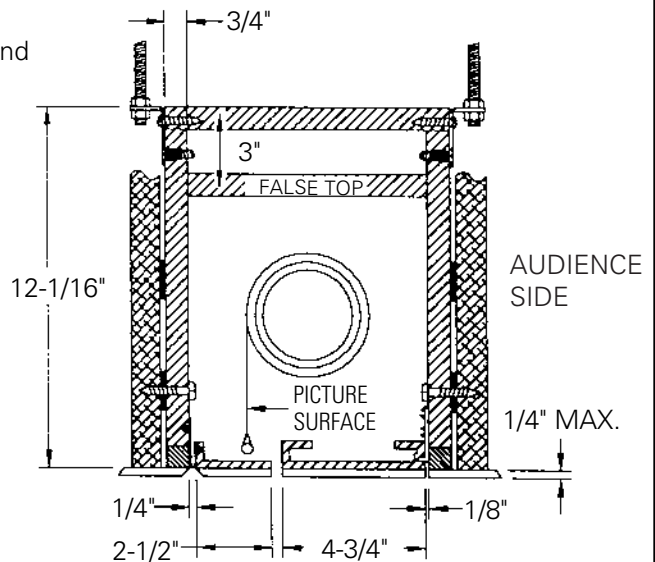
Offset mounting, recessed above ceiling, for plaster, dry wall or paneling. Door painted same finish as ceiling.

NOTE: Paint the same as doors and ceiling or remove and replace with ceiling tile.

TYPE 1 AND 2

Allow 1/8" min. clearance all around surface door.

Flush mounting, recessed above ceiling. For use with 1/4" max. paneling or installation in existing ceiling using molding around door.



TYPE 3

Allow 1/4" min. clearance all around surface door.

Extended mounting, recessed above ceiling. For use with acoustical or other ceiling tile 3/4" thick laid over door.

